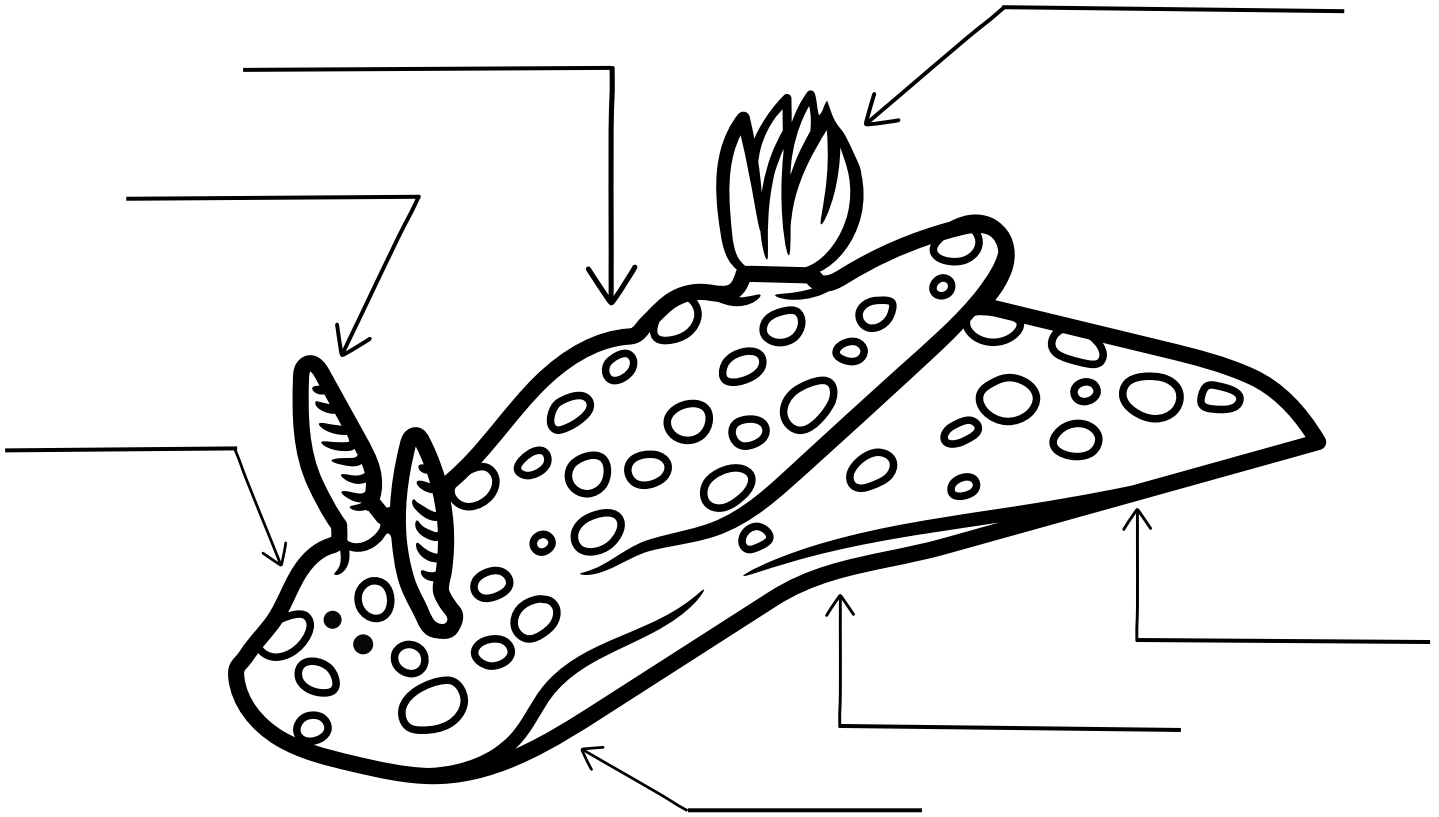


# DORID NUDIBRANCH ANATOMY



## Background Information

Dorid nudibranchs come in many different colors and patterns, some have spots, stripes, or bumps on their body. Dorids have a round body with a flattened underside. Their **gills** are often arranged in a circle on their back, which are used for breathing. The **mantle** is the upper or "back" part of the main body, which covers the **foot**. **Rhinophores** are two sensory organs located on the top of the head. They look like antennae and help the nudibranchs detect chemical cues in the water. Underneath the head region is the **radula**, a tongue-like row of teeth that act as the mouth. **Eyespots** are simple eyes that detect light and dark, they are very small.

## Match the words to the body part

Gills	Tail	Rhinophores	Eyespots
Foot	Mantle	Radula	

MORE INFO AND EDUCATIONAL MATERIALS:  
[WWW.PACIFICBEACHCOALITION.ORG](http://WWW.PACIFICBEACHCOALITION.ORG)

