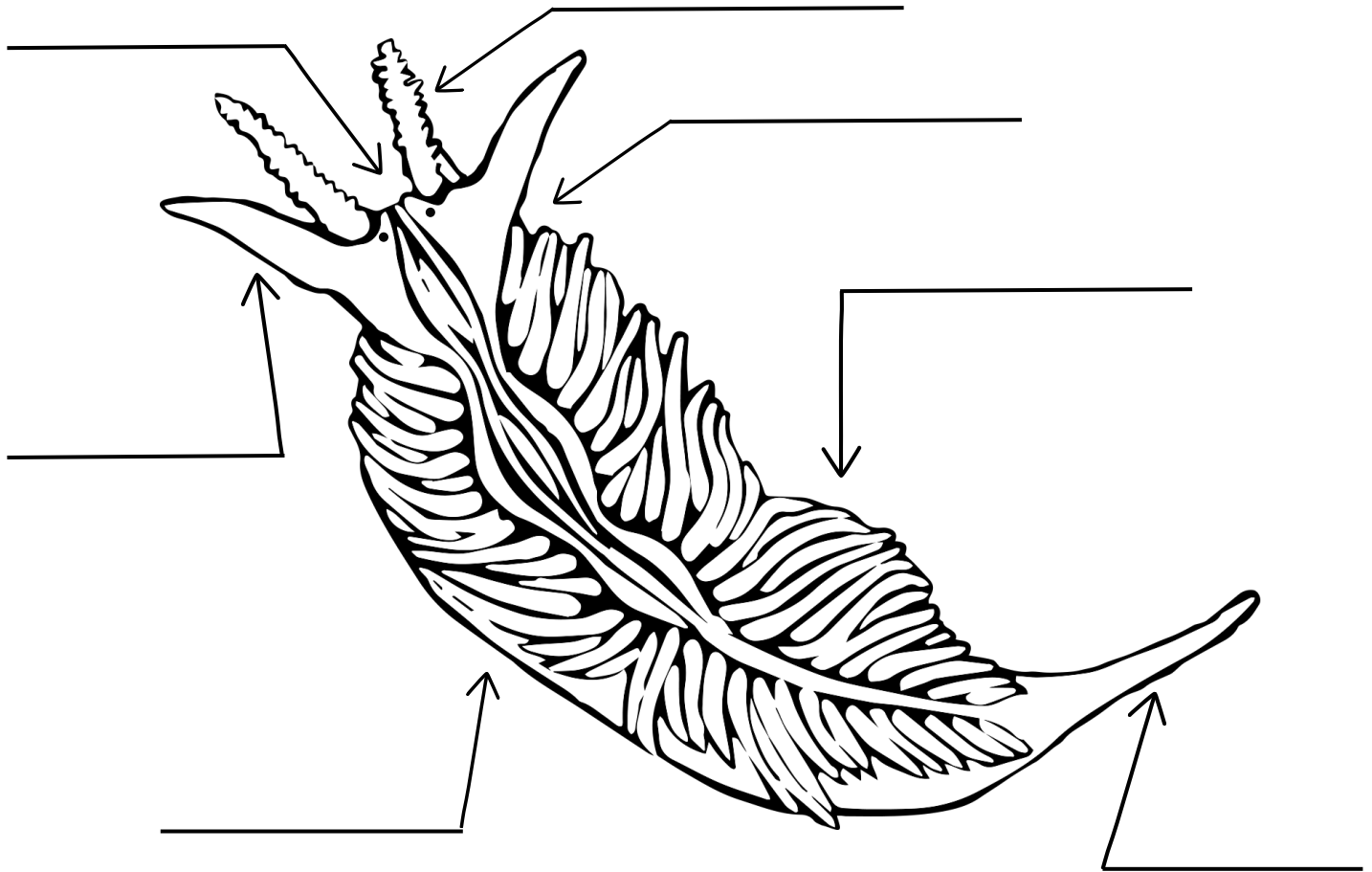


AEOLID NUDIBRANCH ANATOMY



Background Information

Aeolid bodies are covered in small, finger-like projections called **cerata**, which are used for breathing and defense. If attacked, the cerata releases stinging cells to scare away predators. The **mantle** is the upper or "back" part of the main body, it covers the foot. **Rhinophores** are sensory organs on the top of the head. They look like antennae and help the nudibranchs detect chemical cues in the water that help them navigate their environment and find food. **Oral tentacles** are located at the base of the head of aeolid nudibranchs. They are used to detect and capture food, then use a **radula** to eat the food, which is a tongue-like row of teeth, located under the head. **Eyespots** are simple eyes that detect light and dark, they are very small.

Match the words to the body part

Cerata

Tail

Rhinophores

Radula

Oral Tentacles

Mantle

Eyespots

MORE INFO AND EDUCATIONAL MATERIALS:
WWW.PACIFICBEACHCOALITION.ORG

