

NAME: \_\_\_\_\_

DATE: \_\_\_\_\_

# MISSION BLUE BUTTERFLY PRESENTATION BOOKLET

Booklet Directions: Complete the "K" and "W" portions of the KWL Chart (page 2) before watching the presentation. Afterwards fill in the "L" and complete the rest of the booklet, starting on this page. Pages 6-8 are for K-3 students.

Draw the Mission Blue Butterfly, male or female.

Then answer the questions: **I notice...**, **it reminds me of...**, and **I wonder...**

**K**

**what I KNOW**

**W**

**what I WANT to learn**

**L**

**what I LEARNED**

**Instructions:** Think about the Mission Blue Butterfly's relationship with these three other organism types, write down words that come to mind.

**LUPINE PLANTS**

**ANTS**

**HUMANS**

# Mission Blue Habitat

Instructions: Research, draw or list the habitat of the Mission Blue Habitat. What other species are present?

State: \_\_\_\_\_ Habitat Type: \_\_\_\_\_

Biggest threats: \_\_\_\_\_

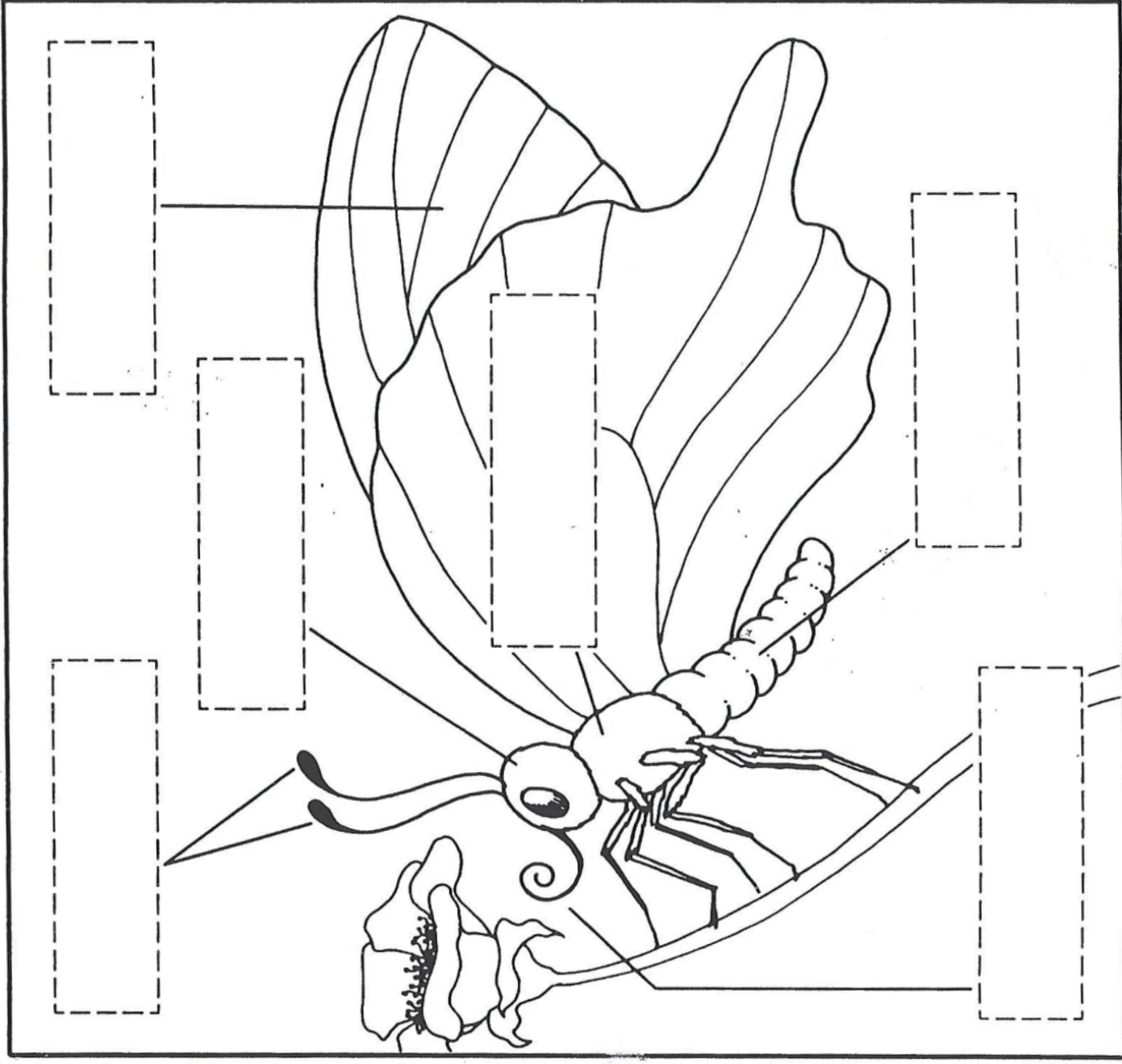


What does a day in the life of Mission Blue look like? Smell like? Write, draw, or research your thoughts here or on a separate page. Work in groups, or alone and discuss or present your thoughts to the class.

# Parts of a Butterfly

Name \_\_\_\_\_

Cut out the names of the parts of a butterfly. Glue each name in the correct space.



antennae	thorax	abdomen
proboscis or feeding tube	head	wings

# Butterfly or Moth?

Name \_\_\_\_\_

Cut out the pictures. Match each picture to a sentence. Glue the pictures so they are standing up.  
(Read sentences aloud to younger students.)

1. A butterfly has an antenna that ends  
with a round tip.



2. A moth antenna looks like a feather.



3. A butterfly rests with its wings up.

4. A moth rests with its wings spread out.



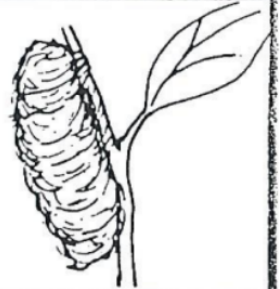
5. A butterfly comes from a chrysalis.



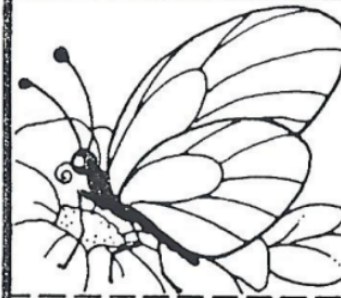
6. A moth comes from a cocoon.



Fold back and glue.



Fold back and glue.



Fold back and glue.



Fold back and glue.



Fold back and glue.



Fold back and glue.

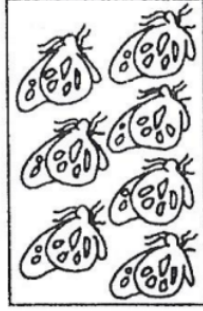


# Add Up the Insects

Solve each problem.

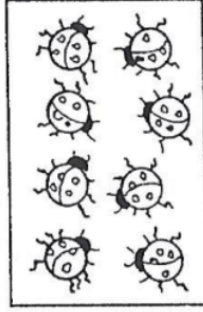


+

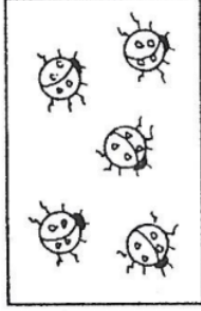


=

\_\_\_\_\_ butterflies

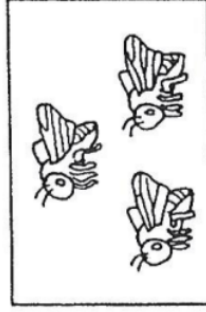


+

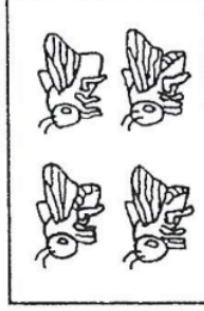


=

\_\_\_\_\_ ladybugs

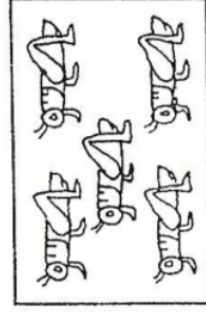


+

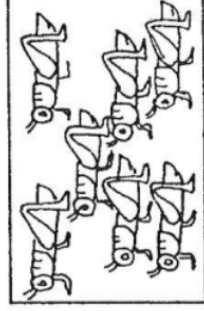


=

\_\_\_\_\_ bumblebees

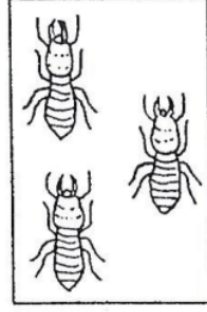


+

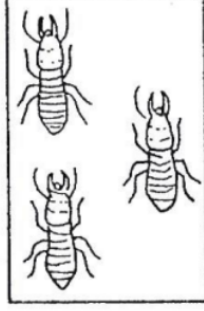


=

\_\_\_\_\_ grasshoppers

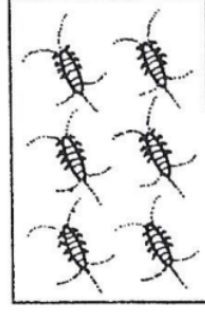


+

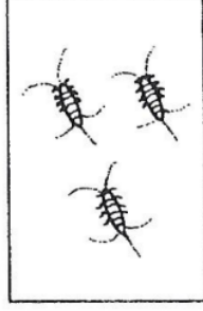


=

\_\_\_\_\_ termites



+



=

\_\_\_\_\_ silverfish

**Brainwork!** Create six more insect math problems. Give them to a friend to solve.

.....