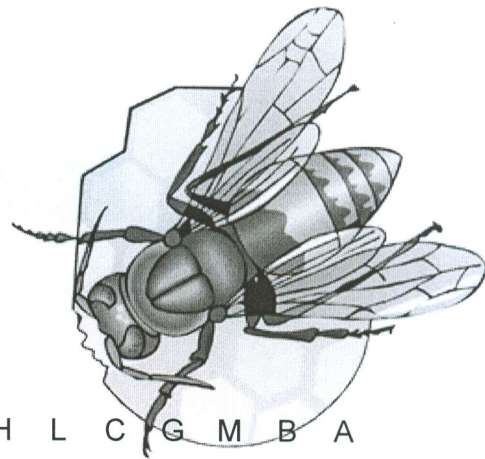


Name: \_\_\_\_\_

Date: \_\_\_\_\_

# Bees, Word, Search

Complete, the, activity.



Y D Q U E E N B G W H L C G M B A  
R W R W R S F W Z B Q M M T I M R  
R W A O A H I X S W M J I B U O O  
B Y D D N Z M S O A P T H P K J B  
E I V F L E X R O C W N B O T T O  
B N K E B M K V P H F C E S N V Q  
O M V B H E R O O P Z Y P F D E N  
Z I P H R P L N S K P V S M C U Y  
D H G N D L E C W C K O W C R U N  
Y E U S E Y B H N K N V L S X M Y  
F C I N C F F X V E L T E V O W H  
Y E D O S Y Z P Z M C B R Y Q I N  
T F M U O O K J M U E T A A V L Q  
Q B Y K Q X L I T E L N A E F G P  
K W M R B L K E D Q N S V R W H N  
N T F B W Y Z X H E B V K J A I W  
J D D S T I N G N N T E P T R S M

pollen  
honey  
hive  
worker

nectar  
sting  
nurse, bee

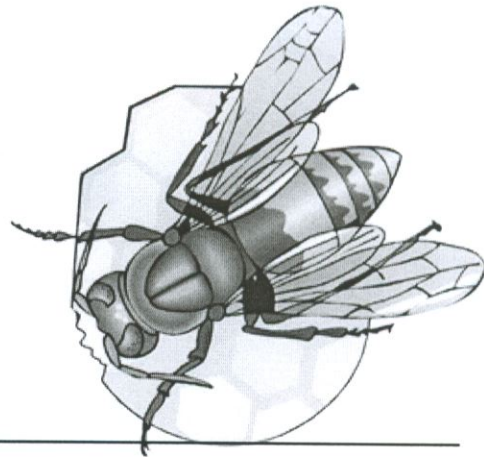
drone  
honeycomb  
queen

Name: \_\_\_\_\_

Date: \_\_\_\_\_

# Bees, Alphabet, Activity

Complete, the, activity.



1. \_\_\_\_\_
2. \_\_\_\_\_
3. \_\_\_\_\_
4. \_\_\_\_\_
5. \_\_\_\_\_
6. \_\_\_\_\_
7. \_\_\_\_\_
8. \_\_\_\_\_
9. \_\_\_\_\_
- 10., \_\_\_\_\_

pollen  
worker  
queen  
honeycomb

nurse, bee  
nectar  
hive

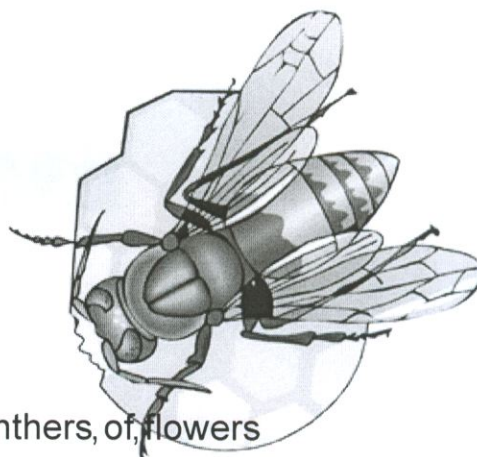
honey  
sting  
drone

Name: \_\_\_\_\_

Date: \_\_\_\_\_

## Bees, Vocabulary

Complete the activity.



1. \_\_\_\_\_ Dustlike, cells, of, the, anthers, of, flowers
2. \_\_\_\_\_ Male, bee, whose, only, function, is, to, mate, with, the, queen
3. \_\_\_\_\_ Worker, bee, that, attend, to, the, queen,, the, babies,, or, larvae, of, the, hive
4. \_\_\_\_\_ Female, bees, who, collect, nectar, and, pollen, from, flowers
5. \_\_\_\_\_ A, structure, for, housing, bees
6. \_\_\_\_\_ Bees, depend, on, this, for, their, defense
7. \_\_\_\_\_ Cells, where, honey, is, stored
8. \_\_\_\_\_ Sweet, liquid, of, flowers, gathered, by, bees, for, making, honey
9. \_\_\_\_\_ Female, bee, whose, only, job, is, to, lay, eggs
10. \_\_\_\_\_ A, sweet, fluid, produced, by, bees, from, nectar

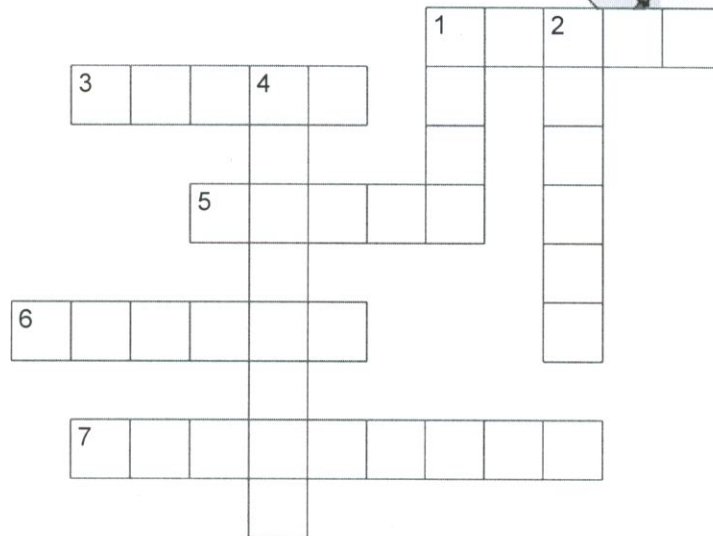
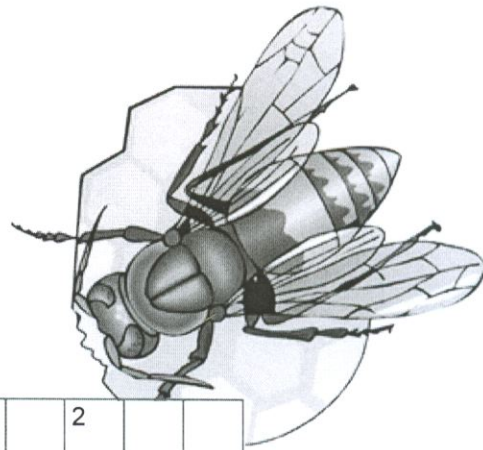
honey	nurse, bee	honeycomb	hive
sting	drone	worker	nectar
queen	pollen		

Name: \_\_\_\_\_

Date: \_\_\_\_\_

# Bees, Crossword, Puzzle

Complete, the, activity.



## ACROSS

1. A, sweet, fluid, produced, by, bees from, nectar
3. Bees, depend, on, this, for, their, defense
5. Male, bee, whose, only, function, is, to, mate, with, the, queen
6. Dustlike, cells, of, the, anthers, of, flowers
7. Cells, where, honey, is, stored

## DOWN

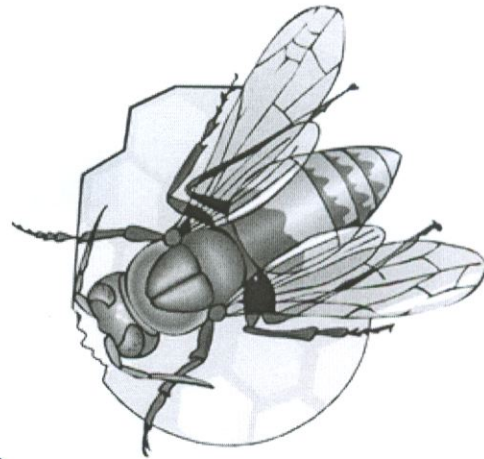
1. A, structure, for, housing, bees
2. Sweet, liquid, of, flowers, gathered, by, bees, for, making, honey
4. Worker, bee, that, attend, to, the, queen,, the, babies,, or, larvae, of, the, hive

Name: \_\_\_\_\_

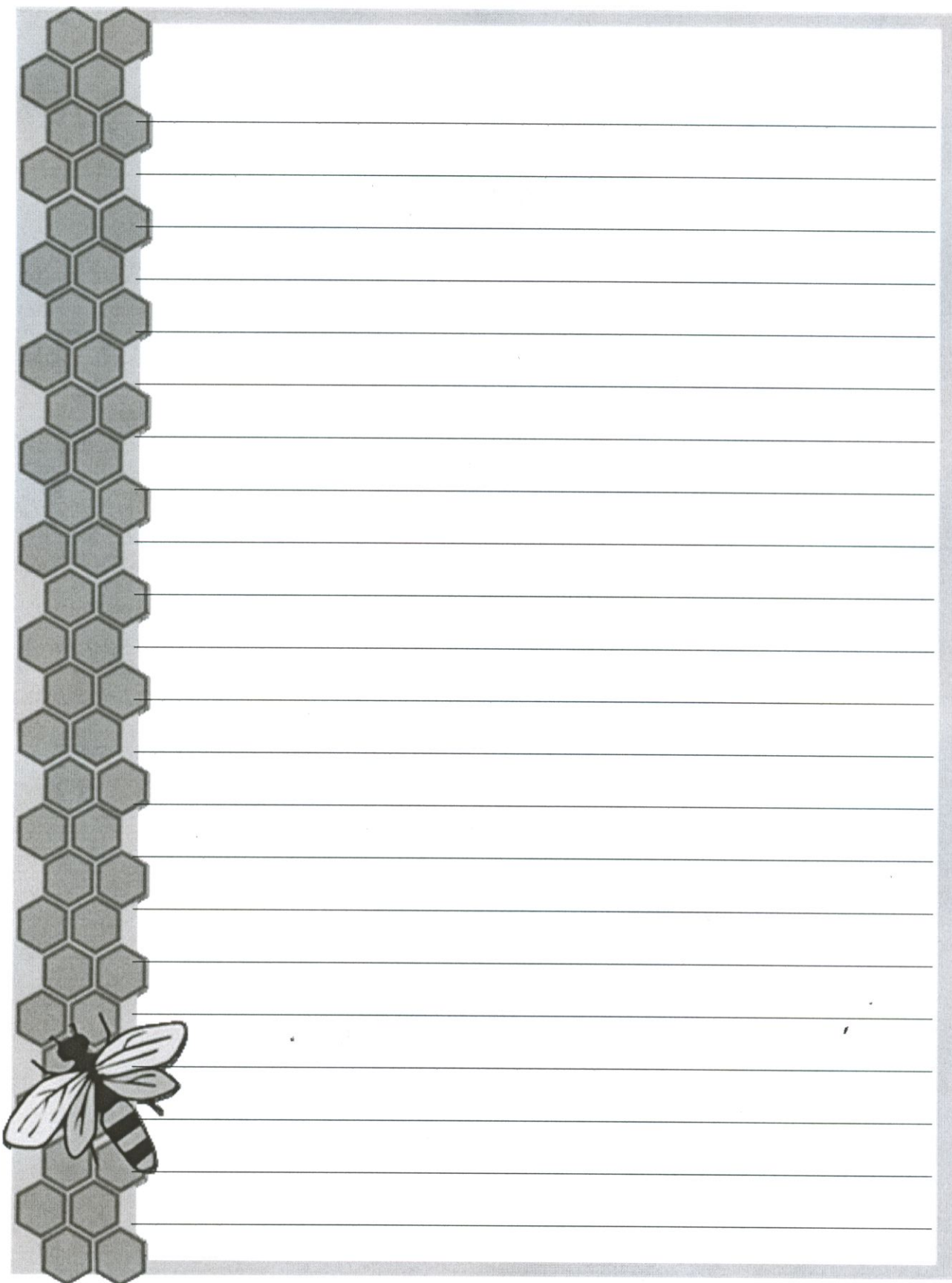
Date: \_\_\_\_\_

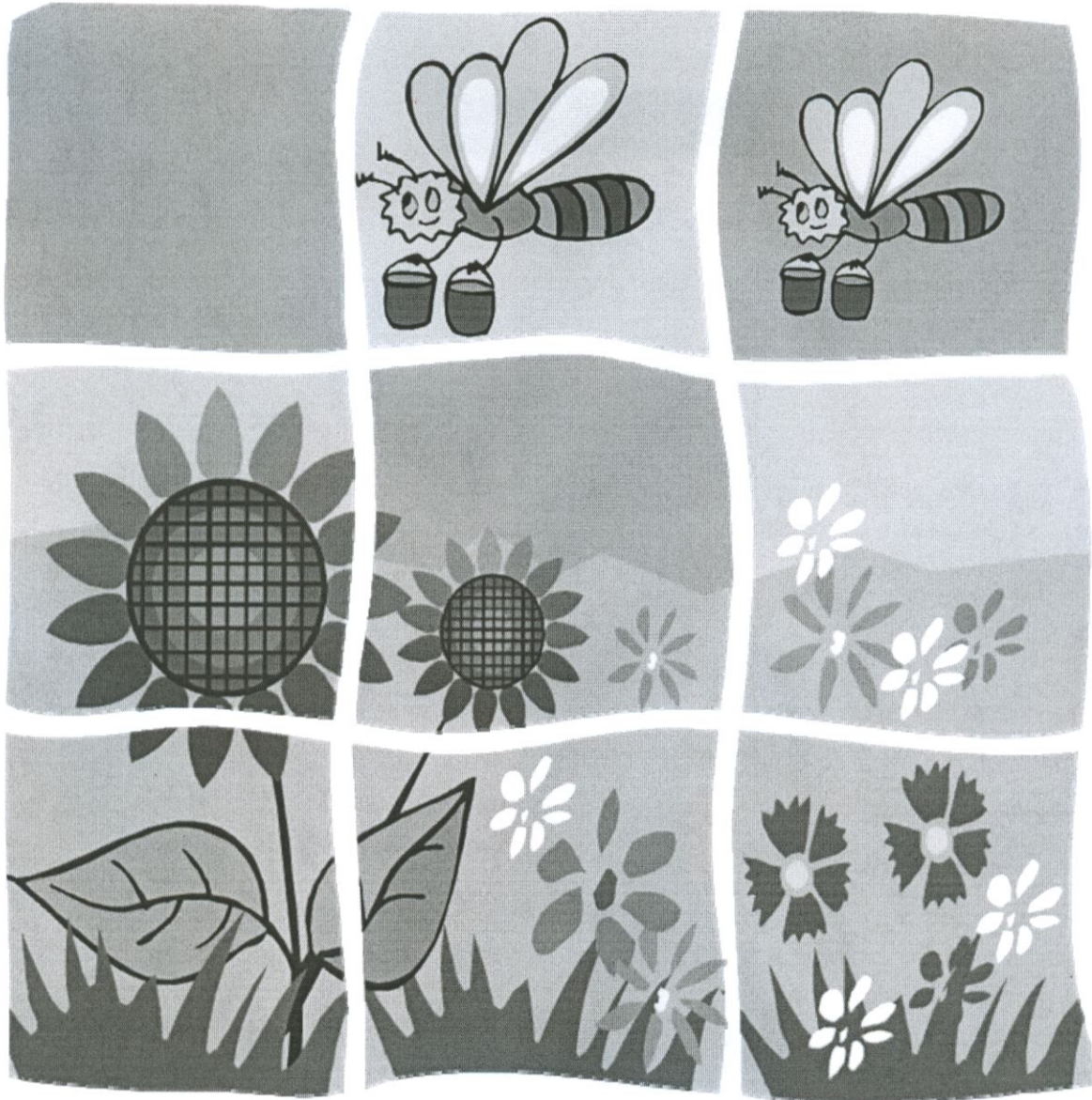
## Bees, Challenge

Complete, the, activity.



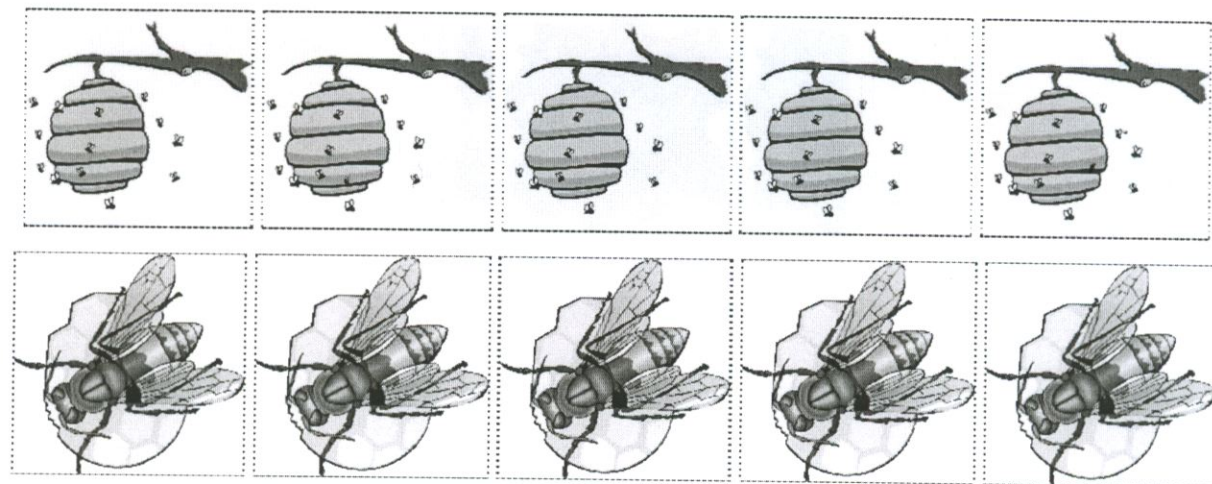
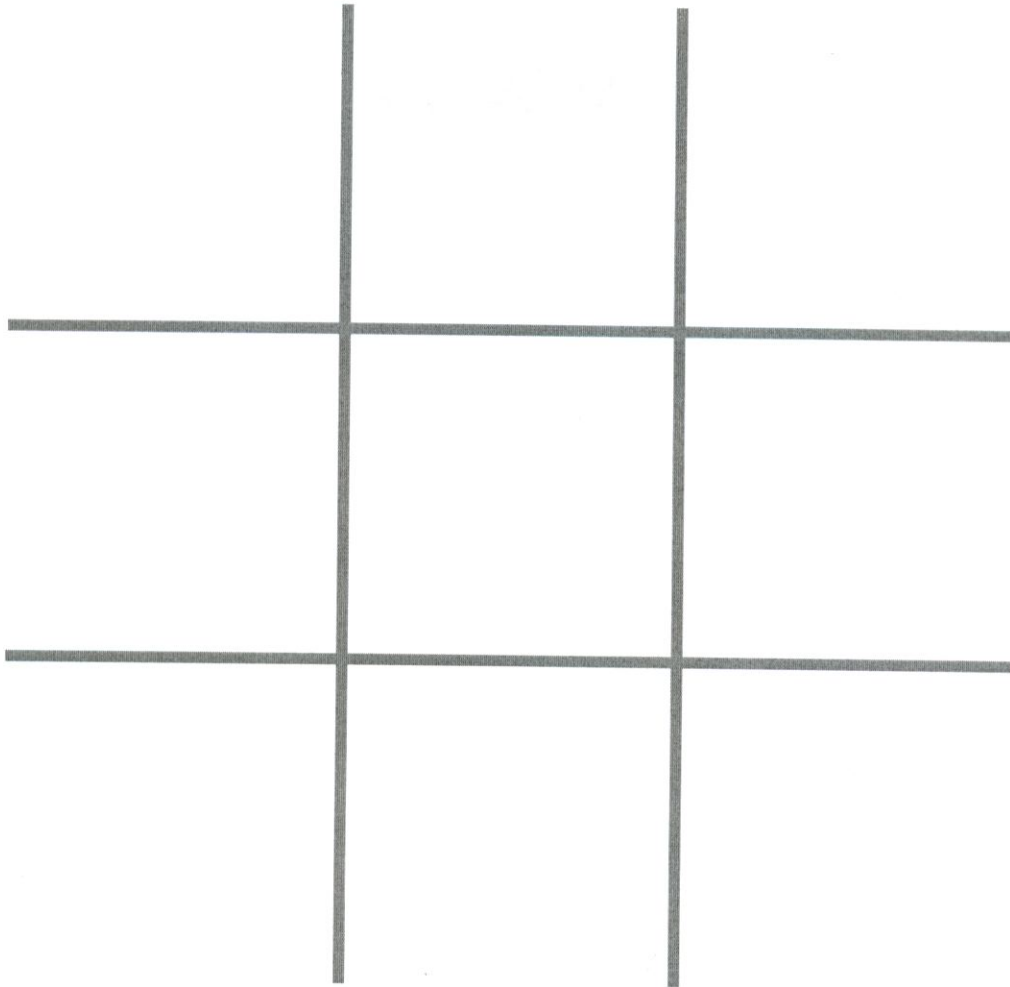
- \_\_\_ 1. Cells, where, honey, is, stored  
A., worker,,, B., sting,,, C., honeycomb,,, D., hive
- \_\_\_ 2. A, sweet, fluid, produced, by, bees, from, nectar  
A., nectar,,, B., nurse, bee,,, C., honey,,, D., drone
- \_\_\_ 3. Bees, depend, on, this, for, their, defense  
A., pollen,,, B., sting,,, C., nectar,,, D., queen
- \_\_\_ 4. Sweet, liquid, of, flowers, gathered, by, bees, for, making, honey  
A., drone,,, B., worker,,, C., honeycomb,,, D., nectar
- \_\_\_ 5. Female, bees, who, collect, nectar, and, pollen, from, flowers  
A., honeycomb,,, B., hive,,, C., worker,,, D., honey
- \_\_\_ 6. Male, bee, whose, only, function, is, to, mate, with, the, queen  
A., drone,,, B., honeycomb,,, C., sting,,, D., honey
- \_\_\_ 7. A, structure, for, housing, bees  
A., queen,,, B., hive,,, C., pollen,,, D., nectar
- \_\_\_ 8. Dustlike, cells, of, the, anthers, of, flowers  
A., pollen,,, B., honeycomb,,, C., sting,,, D., hive
- \_\_\_ 9. Female, bee, whose, only, job, is, to, lay, eggs  
A., queen,,, B., drone,,, C., sting,,, D., honeycomb
- \_\_\_ 10. Worker, bee, that, attend, to, the, queen,, the, babies,, or, larvae, of, the, hive  
A., nurse, bee,,, B., honey,,, C., nectar,,, D., hive





Cut apart the pieces to make a puzzle.

# Bees - Tic-Tac-Toe





Bb



## Beehives

# *The Bee and the Mountain Laurel*

